

COMTREND

WiFi 5

MESH-ENHANCED EXTENDER

Dual-Band AC1200Mbps | Mesh-Enhanced | TR-069

WAP-5903

The WAP-5903 WiFi 5 Mesh-Enhanced Extender is a telco-grade wireless extender that intelligently boosts WiFi coverage throughout the home network. The WAP-5903 supports WifiXtend2.0™ which is Comtrend's Mesh-Enhanced WiFi system. When the WAP-5903 is paired with at least one other WifiXtend2.0™- supported Mesh Gateway/Node, it creates a powerful, wall-to wall Mesh-Enhanced WiFi network.



WiFi Everywhere You Want it:
High-Performance AC1200 WiFi, together with beamforming technology, effortlessly reaches remote locations of the home.

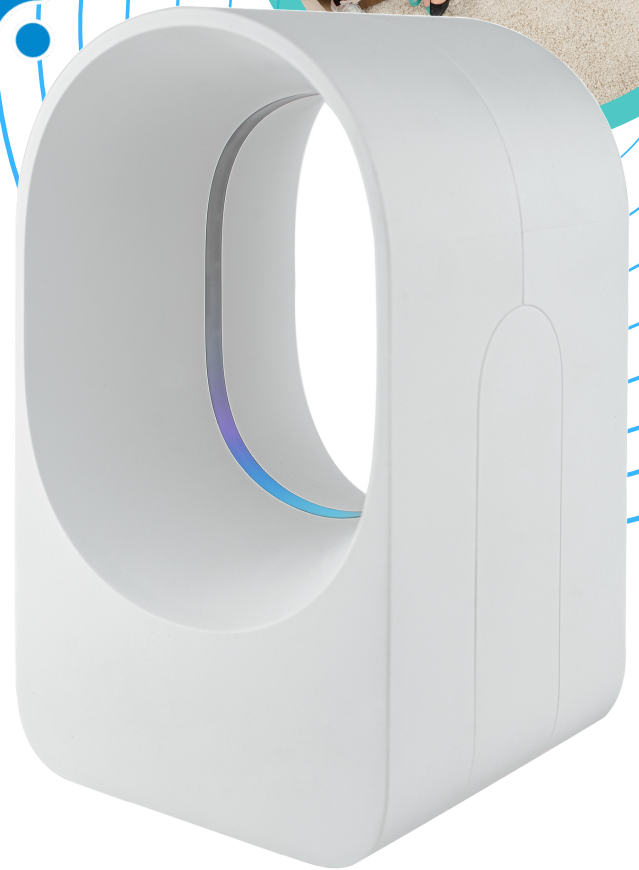


Seamless WiFi Mesh System:
WifiXtend2.0™ utilizes mesh-enhanced technologies including Adaptive Roaming and Self Healing to provide an enhanced subscriber experience.



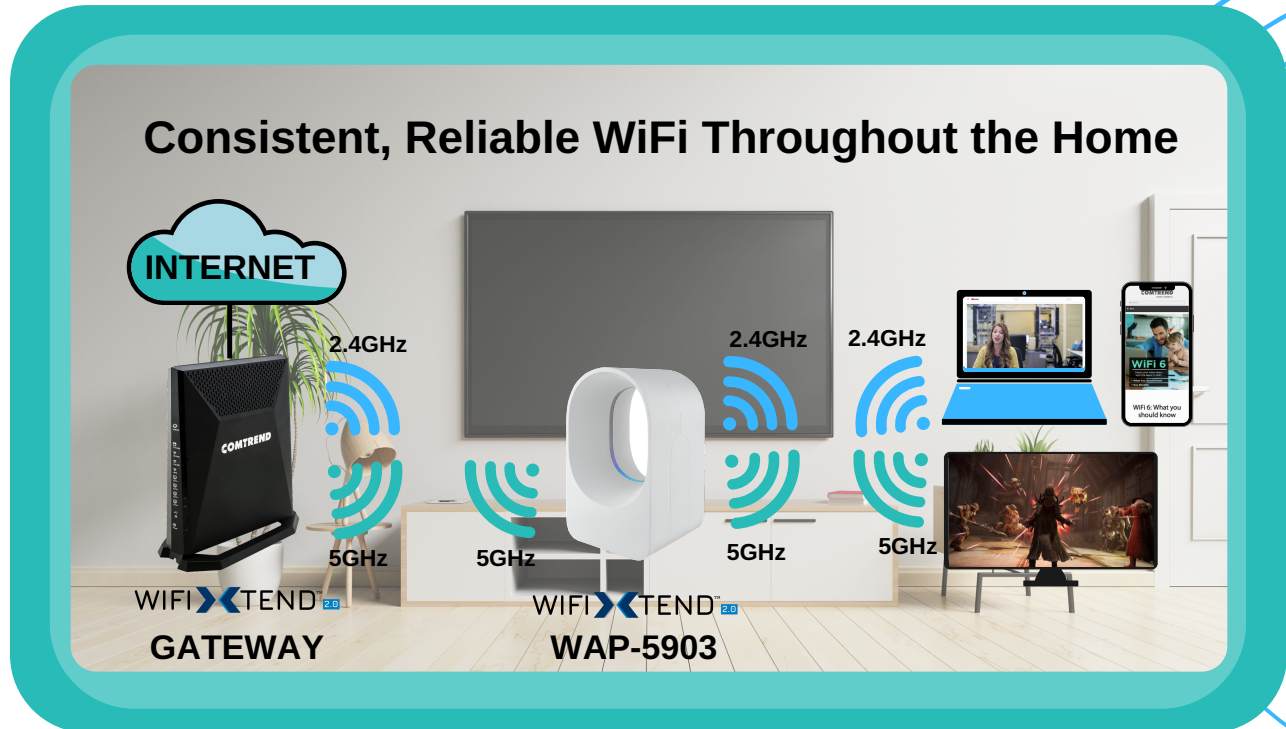
Remote Management for Reduced Truck Rolls
TR-069 support allows you to remotely setup, manage, troubleshoot, and control the WAP-5903.

COMTREND
530 Technology Drive Ste 100
Irvine, CA 92618
(949) 753-9640 | us.comtrend.com
DS_WAP-5903_V1.0.2



WiFi X TEND™ 2.0





Specifications

Hardware

- RJ-45 X 1 for LAN (10/100/1000)
- RJ-45 X 1 for UPLINK (10/100/1000)
- Reset button X 1
- Dual Band WiFi Antenna X 2

WLAN

- AC1200 PHY Rate
 - 5GHz: Up to 867Mbps
 - 2GHz: Up to 300Mbps
- Up to 500mW TX Power
- Wireless Security WPA2-PSK
- Wireless Roaming IEEE802.11v/r

Power

- Input: 100-240V—50/60Hz, 0.6A
- Output: DC 12V==1.5A

Management

- TR-069 Support
- Comtrend ACS 3.0 Cloud Management

Advanced Features

- Operation Mode: AP/Repeater
- Mesh System: WifiXtend2.0™
- MU-MIMO
- Band Steering

Environment Condition

- Operating temperature: 0 ~ 40 degrees Celsius
- Relative humidity: 8 ~ 95% (non-condensing)
- Designed for indoor use only

Dimensions

- 6.49in (H) x 4.13in (W) x 3.93in (D)
- 165mm (H) x 105mm (W) x 100mm (D)

Certifications

- FCC, CE

Note: Specifications are subject to change without notice