

XV2-21X Wi-Fi 6 Access Point

802.11ax Dual-Radio Indoor Access Point

QUICK LOOK:

- Dual Radio Wi-Fi 6
- 5 GHz (2x2), 2.4 GHz (2x2)
- 1 GbE RJ45 interface
- Managed by cnMaestro™, Swift
- Limited lifetime warranty



Back panel with mounting bracket

Value-Tier Wi-Fi for any market

Cambium Networks XV2-21X Wi-Fi 6 Indoor access point delivers a high-performance to price ratio attractive to any market.

The XV2-21X can be adopted and managed by any of the Cambium Networks management systems, cnMaestro™ Cloud, cnMaestro™ X, cnMaestro™ on-premises, or Swift app-based management. Choose the management type you need, and change it at any time. Unlike other value-tier access points, the XV2-21X is never locked into just one management selection.

Designed for fast installation

The XV2-21X offers multiple installation methods included in the same shipping box. Mount the AP to a ceiling tile using the included steel plate, mount to an existing junction box with 83mm center-to-center holes, twist lock the AP onto a 36mm, 24mm and 14mm T-bar, or simply mount it to any flat surface using the included wall anchors. No accessory brackets are needed.

XV2-21X Wi-Fi 6 Access Point

Access Point Specifications

Note: Some features will be included on subsequent firmware releases.

FCC Ch 1–11, 36–48, 100–144, 149–165

ISED Ch 1–11, 36–48, 100–116, 149–165

ETSI Ch 1–13, 36–64, 100–140

ROW *Individual country limits may apply. Please contact sales for country specific regulations.*

Note: FCC, IC, EU DFS channels not supported in first release

Radios
5 GHz 802.11 a/n/ac Wave 2/ax, 2x2:2
2.4 GHz 802.11 b/g/n/ax, 2x2:2

Wi-Fi 802.11 a/b/g/n/ac Wave 2/ax

SSID Security WPA3-SAE, WPA3-Enterprise, WPA2 (CCMP, AES, 802.11i), WPA2 Enterprise (802.1x/EAP), WEP, Open

Max PHY Rate
5 GHz radio 2402 Mbps
2.4 GHz radio 573.5Mbps

Ports 1 x IEEE 10/100/1000 Mbps

Antenna
5 GHz 6 dBi
2.4 GHz 5 dBi

Max EIRP
5 GHz 33 dBm
2.4 GHz 32 dBm

Power Typical 11W, 802.3af powered device

Dimensions 155 mm x 155 mm x 37 mm
 (6.1 in x 6.1 in x 1.46 in)

With Bracket:

155 x 155 x 46 mm
 (6.1 x 6.1 x 1.81 in)

Weight 475g (1.05 lbs)

LEDs Multi-color status LEDs, dimmable, on/off

Ambient Operation Temperature 0°C to 50°C (32°F to 122°F)

Storage Temperature -40°C to 70°C (-40°F to 158°F)

Humidity 95% RH non-condensing

MTBF 1,980,244 hours at 50°C ambient (estimated)

Mount Options Wall or ceiling, T-bar with included locking bracket, ceiling tile plate

Certifications (Compliance) Passpoint 3.0, 802.11 a/b/e/g/i/k/n/r/u/v/w/ac/ax, PP2.0, FCC, IC, ETSI, CE, EN 60601-1-2, IEC60950, IEC62368, UL2043, EN 61373

XV2-21X Wi-Fi 6 Access Point

Network Specifications

Note: Some features will be included on subsequent firmware releases.

Operational Modes Controller-less standalone
Cloud-managed cnMaestro, VM

WLAN 16 WLAN profiles per radio
128 clients per radio, 16 SSIDs,
WPA-TKIP, WPA2 AES, 802.1x
802.11w PMF

**Guest Access/
Captive Portal** cnMaestro, On-AP hosted guest portal
Social login, Voucher based login, SMS
gateway, Payment gateway support.
Supports radius based authentication.
cnMaestro API support for external captive
portal integration.

**Authentication
Encryption** Hotspot 2.0, 802.1x EAP-SIM/AKA,
EAP-PEAP, EAP-TTLS, EAP-TLS, MAC
Authentication local database or RADIUS

**Scheduled
WLAN** On/off by day, week, time of day

Data Limit Client bitrate/time/throughput limit per SSID

Subscriber QoS WMM

Fast Roaming 802.11r, OKC, cnMaestro assisted roam

Mesh Multi-hop, either band

**Channel
Selection** Multi-modal channel selection with
AutoChannel and autotune (cnMaestro)

**RF
Management** Multi-Modal RF optimization supporting
AutoRF (cnMaestro) performed in the
intelligent edge AP. Out of band RF
spectrum analysis, RF monitor with chn/
noise/interference

Network TCP connection log, NAT logging firewall,
DHCP server, L2, L3 or DNS based access
control, VLAN Pooling, RADIUS attribute VID
VLAN per SSID per user

**Band Steer
Load Balance** Yes

Tunnel L2TPv2, L2GRE, PPPoE

Network Tools Wired and wireless remote packet capture,
logging, ZapD

**Network and
RF Management
Tools** Wired and wireless remote packet capture,
ZapD performance tool, rogue AP detection

Services L2-L7 application visibility & control, WiFi
Calling control, WIDs/WIPs, NTP, Syslog,
SNMP traps, DNS proxy, auto-off on
WAN failure

API RESTful management and statistics API
Presence location APIs

IP IPv4, IPv6

Standards

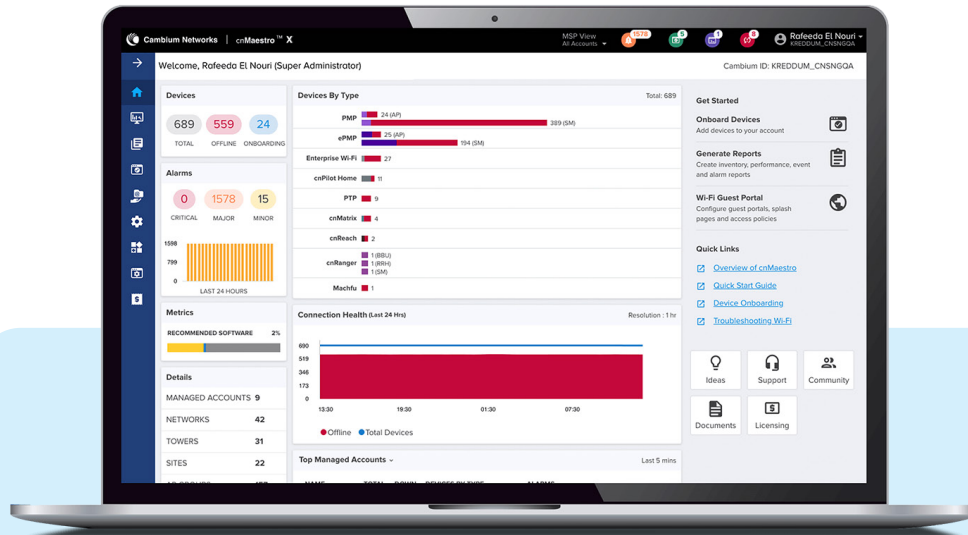
**Wi-Fi
Protocols** VHT MCS rates, 16/64/256/1024-QAM, 20/40/80/160 MHz

TWT, Long OFDM Symbol, Transmit beamforming, Airtime Fairness, AMSDU, AMPDU, RIFS, STBC, LDPC, MIMO Power Save, MRC, BPSK, QPSK, CCK, DSSS, OFDM, OFDMA, UL/DL MU-MIMO

IEEE 802.11 a/ac/ax/b/d/e/g/h/i/k/n/r/u/v

XV2-21X Wi-Fi 6 Access Point

Management



To serve a growing market for advanced management and services functionality, Cambium Networks offers cnMaestro™ in two different management tiers:

cnMaestro Essentials

License-free management that delivers a disruptive Total Cost of Ownership (TCO) for organizations of all sizes.

cnMaestro X

Paid subscription that includes:

- Advanced device management capabilities.
- Cambium Care Pro for 24x7 technical support.
- Accelerated access to L2 engineers and regular software updates.
- Upgrades for advanced features.

For More information, please visit:

cambiumnetworks.com/products/software/cnmaestro-essentials

cambiumnetworks.com/products/advanced-services/cnmaestro-x

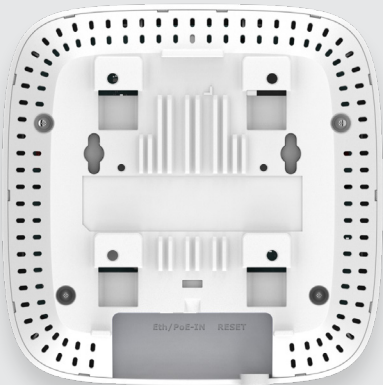
XV2-21X Wi-Fi 6 Access Point



Front Panel



Front Oblique



Back Panel



Bottom / Ports



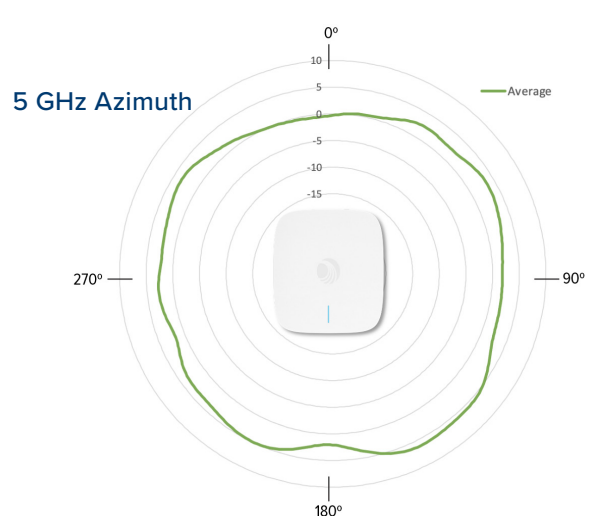
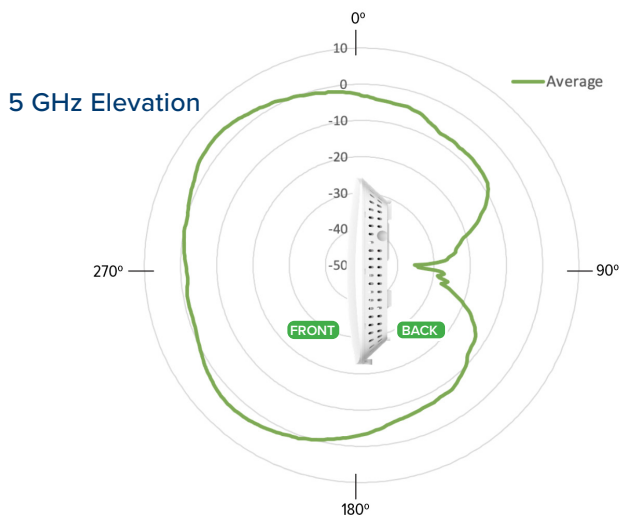
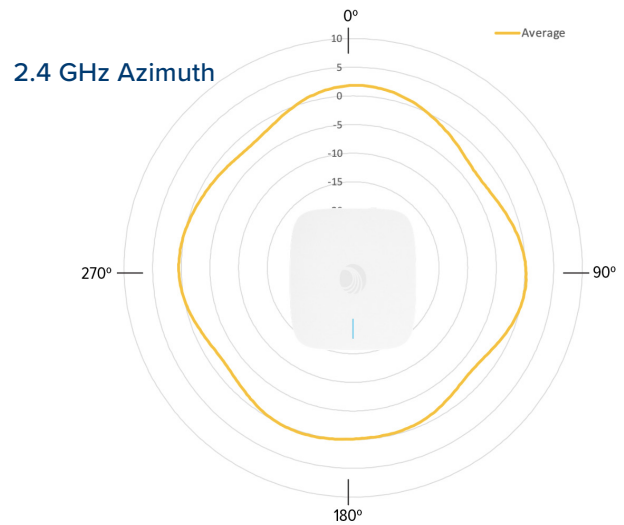
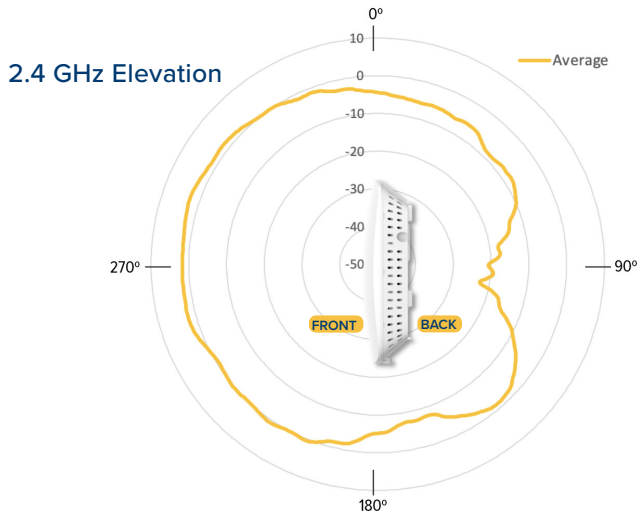
Front Panel with Mounting Bracket



Back Panel with Mounting Bracket

XV2-21X Wi-Fi 6 Access Point

Antenna Patterns



2.4 GHz Receive Sensitivity (dBm) Per Chain

| HT20 | | HT40 | |
|------|-------|------|-------|
| MCS0 | -95.5 | MCS0 | -93 |
| MCS7 | -76.5 | MCS7 | -74 |
| HE20 | | HE40 | |
| MCS0 | -95.5 | MCS0 | -92.5 |
| MCS7 | -76.5 | MCS7 | -73.5 |

2.4 GHz TX Power Target

| Rate | Pout (dBm) |
|------------|------------|
| MCS0 HT20 | 27 |
| MCS7 HT20 | 25 |
| MCS8 VHT20 | 25 |
| MCS9 VHT40 | 24 |
| MCS11 HE40 | 23 |

5 GHz Receive Sensitivity (dBm) Per Chain

| VHT20 | VHT40 | VHT80 | VHT160 |
|-------|-------|-------|--------|
| MCS0 | -95.5 | MCS0 | -94 |
| MCS7 | -77 | MCS7 | -74 |
| MCS0 | -90 | MCS0 | -87.5 |
| MCS7 | -71.5 | MCS7 | -69 |
| HE20 | HE40 | HE80 | HE160 |
| MCS0 | -95.5 | MCS0 | -93.5 |
| MCS7 | -76.5 | MCS7 | -74 |
| MCS0 | -90.5 | MCS0 | -87.5 |
| MCS8 | -65 | MCS8 | -65 |
| MCS11 | -57 | MCS11 | -57 |

5 GHz TX Power Target

| Rate | Pout (dBm) |
|--------------------------------|----------------|
| MCS0 VHT20 | 27 |
| MCS7 VHT20 | 24 |
| MCS0 VHT40, VHT80 | 27, 27 |
| MCS7 VHT40, VHT80 | 24, 24 |
| MCS11, HE20, HE40, HE80, HE160 | 22, 22, 22, 21 |

XV2-21X Wi-Fi 6 Access Point

Cambium Ordering Information

Regulatory Model XV2-21X

XV2-21X0A00-US XV2-21X Indoor Dual radio WiFi 6 AP, 2x2, GbE, US

XV2-21X0A00-EU XV2-21X Indoor Dual radio WiFi 6 AP, 2x2, GbE, EU

XV2-21X0A00-RW XV2-21X Indoor Dual radio WiFi 6 AP, 2x2, GbE, RW

XV2-21X0A00-CA XV2-21X Indoor Dual radio WiFi 6 AP, 2x2, GbE, CA

N000000L142A N000000L142A PoE injector, 60W, 5 GbE, Indoor, Energy Level 6 Supply

N000000L034B PoE, 30.5W, 56V, GbE DC Injector, Indoor, Energy Level 6 Supply, accepts C5 connector

N000900L017A PoE, 15.4W, 56V, GbE DC Injector, Indoor, Energy Level 6 Supply, accepts C5 connector

XA-DROPTILE15 Recessed ceiling tile Installation Kit for 15mm T-bar, 20mm drop extension. 5 Pack

XA-DROPTILE24 Recessed ceiling tile Installation Kit for 24mm T-bar, 20mm drop extension. 5 Pack

AX-E510RBKT-WW Shock mount bracket

cnMaestro X Ordering Information

MSX-SUB-XV2-21X-1 cnMaestro X for one XV2-21X AP. Creates one Device Tier 3 slot. Includes Cambium Care Pro support. 1-year subscription

MSX-SUB-XV2-21X-3 cnMaestro X for one XV2-21X AP. Creates one Device Tier 3 slot. Includes Cambium Care Pro support. 3-year subscription

MSX-SUB-XV2-21X-5 cnMaestro X for one XV2-21X AP. Creates one Device Tier 3 slot. Includes Cambium Care Pro support. 5-year subscription

XV2-21X Wi-Fi 6 Access Point

Cambium Care Ordering Information

| | |
|----------------------------|--|
| CCADV-SUP-XV2-21X-1 | Cambium Care Advanced, 1-year support for one XV2-21X Wi-Fi 6/6E AP. 24x7 TAC support, SW updates, and NBD advance replacement for HW |
| CCADV-SUP-XV2-21X-3 | Cambium Care Advanced, 1-year support for one XV2-21X Wi-Fi 6/6E AP. 24x7 TAC support, SW updates, and NBD advance replacement for HW |
| CCADV-SUP-XV2-21X-5 | Cambium Care Advanced, 3-year support for one XV2-21X Wi-Fi 6/6E AP. 24x7 TAC support, SW updates, and NBD advance replacement for HW |
| CCPRO-SUP-XV2-21X-1 | Cambium Care Pro, 1-year support for one XV2-21X Wi-Fi 6/6E AP. 24x7 TAC support and SW updates |
| CCPRO-SUP-XV2-21X-3 | Cambium Care Pro, 3-year support for one XV2-21X Wi-Fi 6/6E AP. 24x7 TAC support and SW updates |
| CCPRO-SUP-XV2-21X-5 | Cambium Care Pro, 5-year support for one XV2-21X Wi-Fi 6/6E AP. 24x7 TAC support and SW updates |
| CCADV-UPG-XV2-21X-1 | Cambium Care Advanced Add-on to cnMaestro X, 1-year support for one XV2-21X. 24x7 TAC support, SW updates, and NBDS advance replacement for HW |
| CCADV-UPG-XV2-21X-3 | Cambium Care Advanced Add-on to cnMaestro X, 3-year support for one XV2-21X. 24x7 TAC support, SW updates, and NBDS advance replacement for HW |
| CCADV-UPG-XV2-21X-5 | Cambium Care Advanced Add-on to cnMaestro X, 5-year support for one XV2-21X. 24x7 TAC support, SW updates, and NBDS advance replacement for HW |

LIMITED WARRANTY

Cambium Networks XV2-21X Wi-Fi 6 Access Point includes a limited hardware warranty for a period of 5 years after end of sale.

ABOUT CAMBIUM NETWORKS

Cambium Networks empowers millions of people with wireless connectivity worldwide. Its wireless portfolio is used by commercial and government network operators as well as broadband service providers to connect people, places and things. With a single network architecture spanning fixed wireless and Wi-Fi, Cambium Networks enables operators to achieve maximum performance with minimal spectrum. End-to-end cloud management transforms networks into dynamic environments that evolve to meet changing needs with minimal physical human intervention. Cambium Networks empowers a growing ecosystem of partners who design and deliver gigabit wireless solutions that just work.

cambiumnetworks.com

02152023